

Bo Children's Hospital Monthly Report

June 2015

Medical Statistics

The hospital staff have been extremely busy with attendance and admissions as can be seen by the following statistics.

Week	O/P Attendance	Admissions	Referral	Mortality
1	64	22		
2	66	21	1	
3	168	64		
4	129	38		
Total	363	145	1	

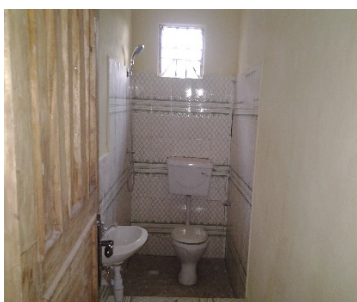
Update on Bo Children's Hospital

Isolation Ward

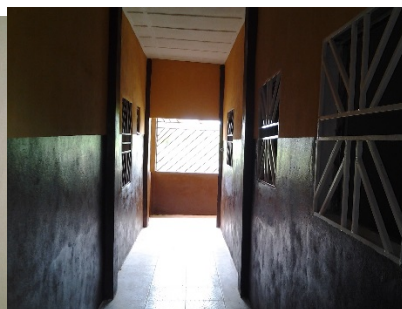
The Isolation Ward has now been completed and the opening ceremony will take place shortly, including dignitaries represented from Bo and Freetown. Work will continue to be carried out on the fit out of the laboratory and the pharmacy. We are indebted to our wonderful donors who have made this a reality.



Entrance to Isolation Wards



Toilet in Isolation Ward



Interior hallway of Isolation Wards

Solar Panels

We are currently seeking further funding for solar panels on the new fit out section to help with the difficulty of servicing the hospital continuously for 24 hours with generators.



Solar panels on original building



Side view of work in progress section now requiring solar panels

